

## Optomechanics

Mounting Basics

Optical Rails

Mirror Mounts

Lens Mounts

Filter Mounts

Rotation Mounts

Adapters

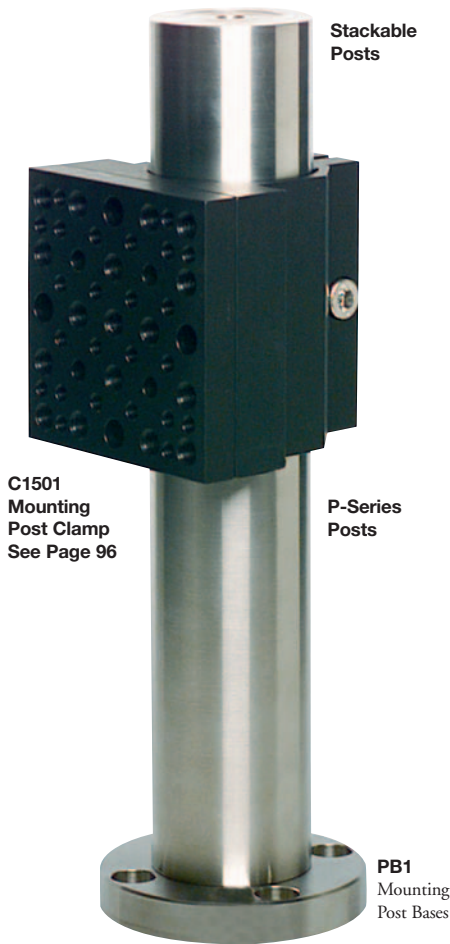
V-Mounts

Apertures  
& Iris Diaphragms

Lens Tubes

Cage Systems

## Ø1.5" Mounting Posts



C1501  
Mounting  
Post Clamp  
See Page 96

Stackable  
Posts

P-Series  
Posts

PB1  
Mounting  
Post Bases

### P-Series Posts

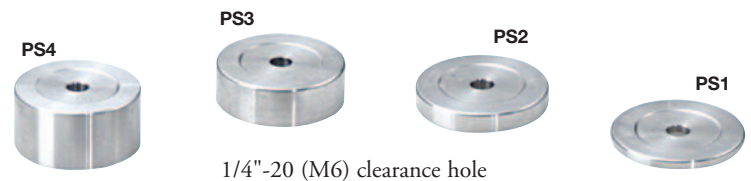
Solid stainless steel P-series posts, Ø1.5" (38mm), with heights ranging from 1.5" (30mm) to 14" (350mm). This design offers the ability to stack multiple mounting posts to achieve an array of lengths. Using a hex wrench (standard 3/16" or 5mm balldriver) inserted through the side clearance hole, sufficient torque can be achieved to tighten securely stacked posts. Mounting spacers are also available to provide greater flexibility in height (shown below).

ITEM#	LENGTH	METRIC ITEM#	LENGTH	\$	£	€	RMB
P1.5	1.5"	P30/M	30mm	\$ 21.60	£ 13.60	€ 20,10	¥ 206.30
P2	2"	P50/M	50mm	\$ 25.80	£ 16.30	€ 24,00	¥ 246.40
P3	3"	P75/M	75mm	\$ 31.90	£ 20.10	€ 29,70	¥ 304.60
P4	4"	P100/M	100mm	\$ 37.10	£ 23.40	€ 34,50	¥ 354.30
P5	5"	P125/M	125mm	\$ 43.30	£ 27.30	€ 40,30	¥ 413.50
P6	6"	P150/M	150mm	\$ 47.40	£ 29.90	€ 44,10	¥ 452.70
P8	8"	P200/M	200mm	\$ 53.60	£ 33.80	€ 49,80	¥ 511.90
P10	10"	P250/M	250mm	\$ 59.70	£ 37.60	€ 55,50	¥ 570.10
P14	14"	P350/M	350mm	\$ 76.20	£ 48.00	€ 70,90	¥ 727.70

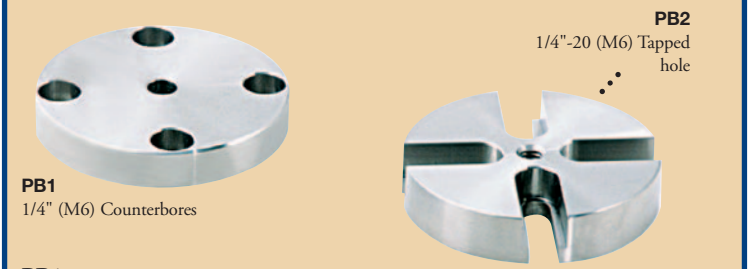
## Ø1.5" Mounting Post Spacers

Mounting post spacers provide greater height flexibility when building support structures, by achieving "in between" heights.

ITEM#	SIZE	METRIC ITEM#	SIZE	\$	£	€	RMB
PS1	1/8"	PS5/M	5mm	\$ 8.20	£ 5.20	€ 7,60	¥ 78.30
PS2	1/4"	PS10/M	10mm	\$ 8.80	£ 5.50	€ 8,20	¥ 84.00
PS3	1/2"	PS15/M	15mm	\$ 9.80	£ 6.20	€ 9,10	¥ 93.60
PS4	3/4"	PS20/M	20mm	\$ 10.30	£ 6.50	€ 9,60	¥ 98.40



## Mounting Post Bases



**PB1**  
1/4" (M6) Counterbores

**PB1**  
The standard post base bolts directly onto P-Series posts. To mount on an optical bench, four 1/4" (M6) counterbored holes on 2" (50mm) centers are provided.

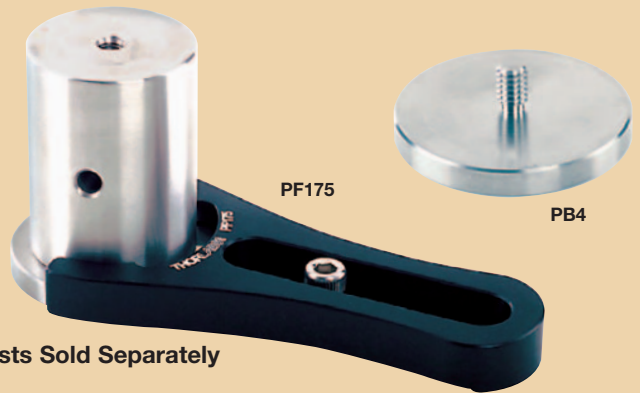
**PB2**  
The universal post base allows random placement of the P-Series post. The PB2 attaches to P-Series posts with a 1/4"-20 (M6) center tapped hole.

ITEM#	METRIC ITEM#	SIZE	\$	£	€	RMB
PB1	PB1*	2.48" Dia. x 0.4"	\$ 23.70	£ 14.90	€ 22,00	¥ 226.30
PB2	PB2/M	2.40" Dia. x 1/2"	\$ 26.80	£ 16.90	€ 24,90	¥ 255.90

\*Universal Design Imperial and Metric Compatible

## Pedestal Post Adapter

The PB4 Pedestal Post Adapter is designed to thread onto the bottom of our P-Series Posts. This allows our heavy duty PF175 Clamp to be used to position the post assembly conveniently on your optical bench.



Posts Sold Separately

ITEM#	METRIC ITEM#	\$	£	€	RMB	DESCRIPTION
PB4	PB4/M	\$ 12.40	£ 7.80	€ 11,50	¥118.40	P-Series Pedestal Base Adapter
PF175	PF175*	\$ 16.80	£ 10.60	€ 15,60	¥160.40	P-Series Clamping Fork

\*Universal Design Imperial and Metric Compatible