

## Optomechanics

Mounting Basics

Optical Rails

Mirror Mounts

Lens Mounts

Filter Mounts

Rotation Mounts

Adapters

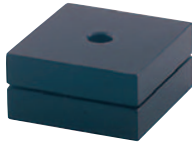
V-Mounts

Apertures & Iris Diaphragms

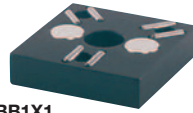
Lens Tubes

Cage Systems

### Kinematic Base 1" x 1"



**KB1X1**  
#8 (M4) Counter bore  
Mounting Hole  
0.50" Assembly Height



**KBB1X1**  
#8 (M4) Counter bore  
Mounting Hole

#### 1" x 1" Kinematic Base

ITEM#	METRIC ITEM#	\$	£	€	RMB	DESCRIPTION
KB1X1	KB25/M	\$ 70.00	£ 44.10	€ 65,10	¥ 668.50	Full Assembly, 1" (25mm) x 1" (25mm)
KBT1X1	KBT25/M	\$ 36.10	£ 22.70	€ 33,60	¥ 344.80	Top Plate, 1" (25mm) x 1" (25mm)
KBB1X1	KBB25/M	\$ 36.10	£ 22.70	€ 33,60	¥ 344.80	Bottom Plate, 1" (25mm) x 1" (25mm)

This kinematic base consists of two plates: a top mounting plate and a bottom base plate. The two plates are magnetically coupled using two pairs of high strength magnets.

The top plate can be removed and replaced, automatically repositioning to an exact location with the repeatability of one microradian.

The bottom plate can be fastened using a center-located #8 (M4) counterbore.

### Kinematic Base 3" x 3"



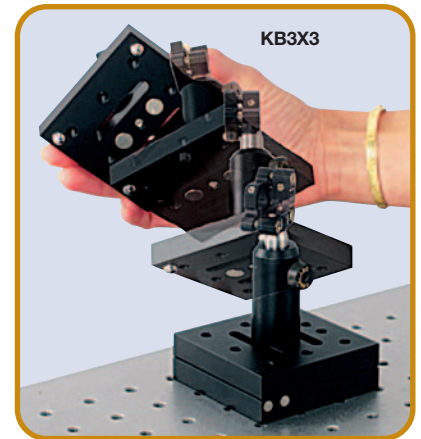
**KB3X3**

This kinematic base consists of two plates: a top mounting plate and a bottom base plate. The two plates are magnetically coupled using two pairs of high strength magnets.

The KB3X3 is ideal for redirecting a laser to multiple targets on your optical table. Applications include precise switching of shared laser systems, directing optical signals to multiple test instruments, and easy exchange of optical components (using additional top mounts).

The bottom plate can be fastened to an optical bench using two 1/4"-20 (M6) clearance slots. These mounting slots can be accessed with the top plate in place.

#### KB3X3: Kinematic Base



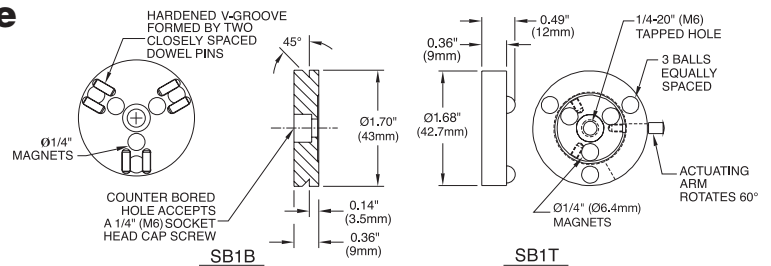
#### 3" x 3" Kinematic Base

ITEM#	METRIC ITEM#	\$	£	€	RMB	DESCRIPTION
KB3X3	KB75/M	\$ 84.50	£ 53.20	€ 78,60	¥ 807.00	Full Assembly, 3" (75mm) x 3" (75mm) x 1" (25mm)
KBT3X3	KBT75/M	\$ 43.30	£ 27.30	€ 40,30	¥ 413.50	Top Plate Only, 3" (75mm) x 3" (75mm)
KBB3X3	KBB75/M	\$ 43.30	£ 27.30	€ 40,30	¥ 413.50	Bottom Plate Only, 3" (75mm) x 3" (75mm)

### Switchable Kinematic Base

This compact kinematic base is designed to allow easy removal and exact repositioning of the top plate.

An On/Off switch controls the magnetic force that firmly holds the two plates together.



Removable Top Plate  
Ø1.68" (Ø42.7mm)



ITEM#	METRIC ITEM#	\$	£	€	RMB	DESCRIPTION
SB1	SB1/M	\$ 90.60	£ 57.10	€ 84,30	¥ 865.20	Complete Kinematic Base
SB1T	SB1T/M	\$ 57.70	£ 36.40	€ 53,70	¥ 551.00	Top Plate Switchable Kinematic Base
SB1B	SB1B*	\$ 39.10	£ 24.60	€ 36,40	¥ 373.40	Bottom Plate Switchable Kinematic Base
CL6	CL6*	\$ 5.60	£ 3.50	€ 5,20	¥ 53.50	Low Profile Table Clamp

\*Imperial and Metric Compatible