

Lens Tube Construction Cubes



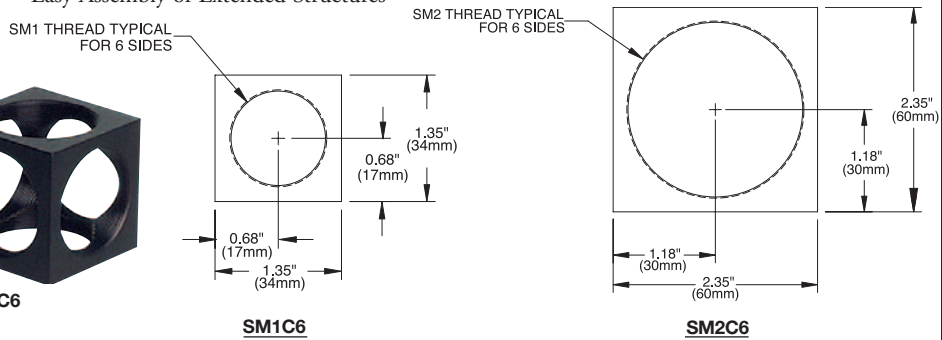
SM2C6

These building blocks are compatible with our SM1 and SM2 Series of lens tubes. These precision-machined components (square and parallel to better than 0.002") can be used in conjunction with our extensive line of SM1 and SM2 threaded components.

- Compatible With the SM1 and SM2 Series of Lens Tubes
- Build Compact 3D Structures
- Easy Assembly of Extended Structures



SM1C6



Application Idea

SM1C6



SM1L30

Lens Tubes

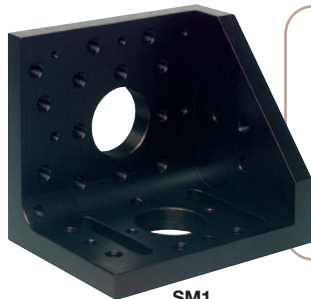
See Page 208

ITEM#	\$	£	€	RMB	DESCRIPTION
SM1C6	\$ 20.40	£ 12.90	€ 19,00	¥ 194.80	SM1 Construction Cube
SM2C6	\$ 39.80	£ 25.10	€ 37,00	¥ 380.10	SM2 Construction Cube

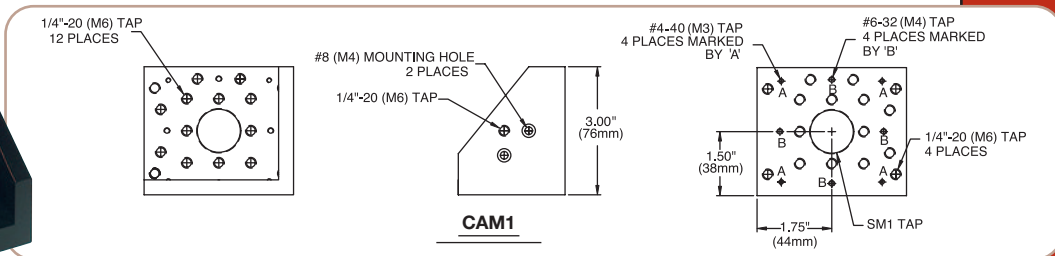
Right-Angle Brackets With Clear Aperture

These right-angle plates with threaded clear apertures offer rigid mounting structures that can be used directly within the beam path. Precision machining the six surfaces from one solid extruded shape provides maximum rigidity, with parallelism and perpendicularity to within 0.002" (0.05mm). The CAM1 is directly compatible with our Ø1" SM Series of lens tubes while the CAM2 is compatible with Ø2" lens tubes.

CAM1

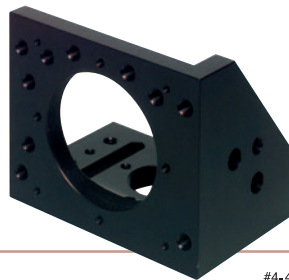


SM1 Threaded Bore

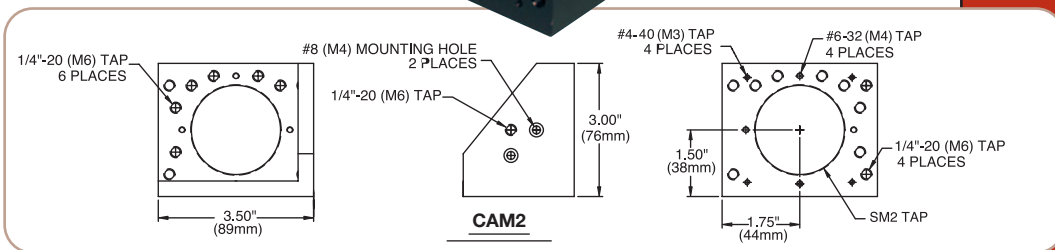


CAM1

SM2 Threaded Bore



CAM2



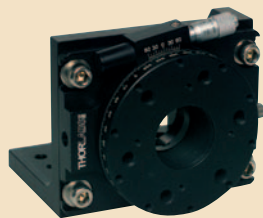
CAM2

Application Idea

PR01 and CAM1

Precision Rotation Stage

See Page 177



ITEM#	METRIC ITEM#	\$	£	€	RMB	DESCRIPTION
CAM1	CAM1/M	\$ 89.00	£ 56.10	€ 82,80	¥ 850.00	Right-Angle Plate With 1.035"-40 Tapped Clear Aperture
CAM2	CAM2/M	\$ 89.00	£ 56.10	€ 82,80	¥ 850.00	Right-Angle Plate With 2.035"-40 Tapped Clear Aperture